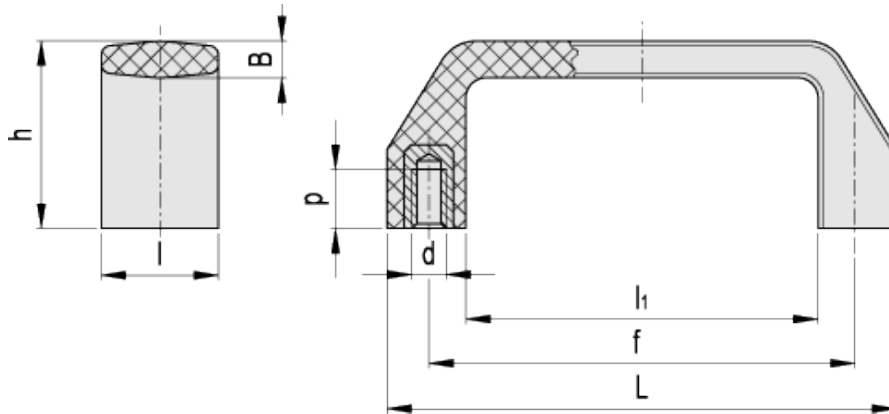


M.543 N

Handle



ELESA Original design



technical informations

Material

Glass-fibre reinforced polypropylene based (PP) technopolymer. Resistant to solvents, oils, greases and other chemical agents.

Colour

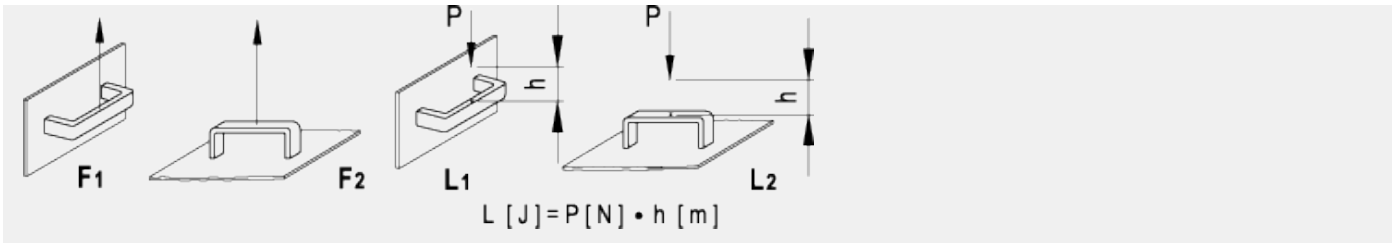
Black, matte finish.

Assembly

Brass bosses, tapped blind holes.

Technical data

Tensile stress and impact strength: F1, F2, L1 and L2 values reported in the table are the result of breaking tests carried out with the appropriate dynamometric equipment under the test conditions shown in the figure with ambient temperature.



Standard Elements		Main dimensions						Threaded bosses		F ₁	F ₂	L ₁	L ₂	Weight
Code	Description	L	f	h	B	l	l ₁	d _{6H}	p	[N]	[N]	[J]	[J]	g
37280	M.543/140 N-B-M6	134	117±0.5	38	7.5	25	102	M6	12	1900	950	9	4	47



ELESA and GANTER models all rights reserved in accordance with the law. Always mention the source when reproducing our drawings.

STANDARD MACHINE ELEMENTS WORLDWIDE